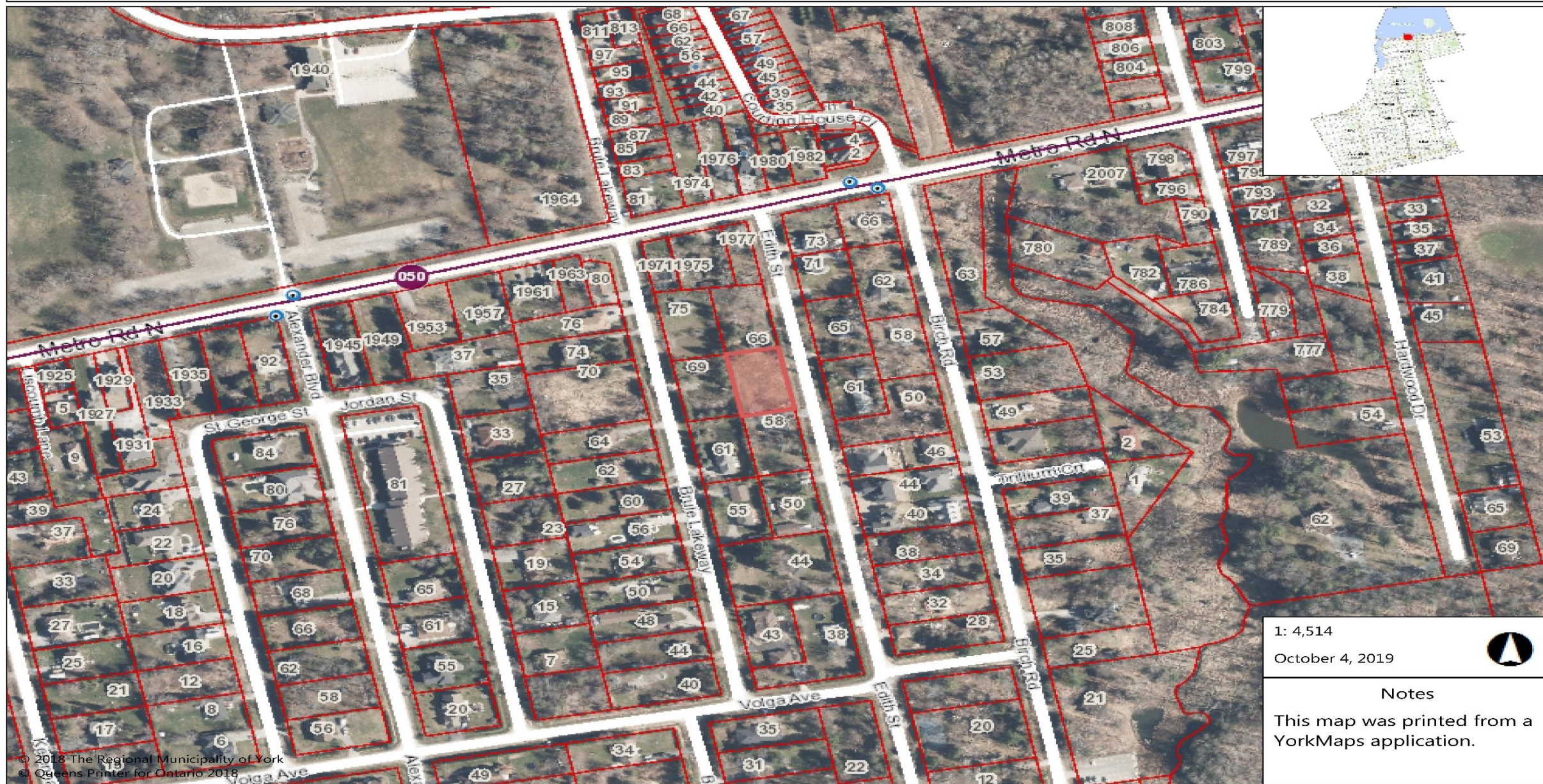


APPLICATION FOR ZONING BY-LAW AMENDMENT

1084466 Ontario Ltd.

W/S Edith Street

Several thin, white, parallel lines of varying lengths and slopes are positioned on the right side of the slide, extending from the top right towards the bottom left.



BRULE LAKEWAY

RESIDENTIAL

LOT 61

LOT 38

RESIDENTIAL

LOT 60

LOT 39

LOT 59

LOT 40

RESIDENTIAL

JUDGES

PLAN

29.56

602
"A"

Subject Lands
698m²

23.61

"B"

Remainder Lands
698m²

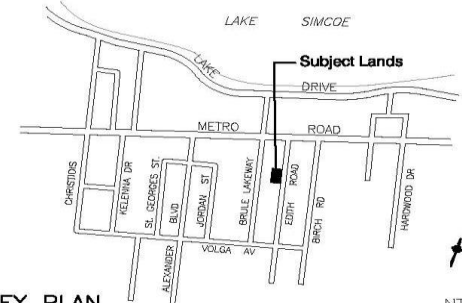
23.61

29.56

47.22

47.22

EDITH ROAD



KEY PLAN

NTS

Subject Lands - 1396m²

SCALE:



PROPOSED SEVERANCE PLAN

1084466 Ontario Ltd.
c/o Albert Ingoglia

Lot 18, Concession 9 (N.G.) Lot 39 Judges Plan 602
Town of Georgina
Regional Municipality of York

Scale:	Approved By:	Drawn by:
Date: July 27, 2019	MRES	QLP

Michael Smith PLANNING CONSULTANTS
DEVELOPMENT COORDINATORS LTD.

REVISIONS:	Drawing Number:
	1234-00