

**Don Chapman Farms Ltd.  
23980 Kennedy Rd.**

Application for Amendment to Zoning By-law  
February 28<sup>th</sup>, 2018



Potter Rd

Kennedy Rd

Kennedy Rd

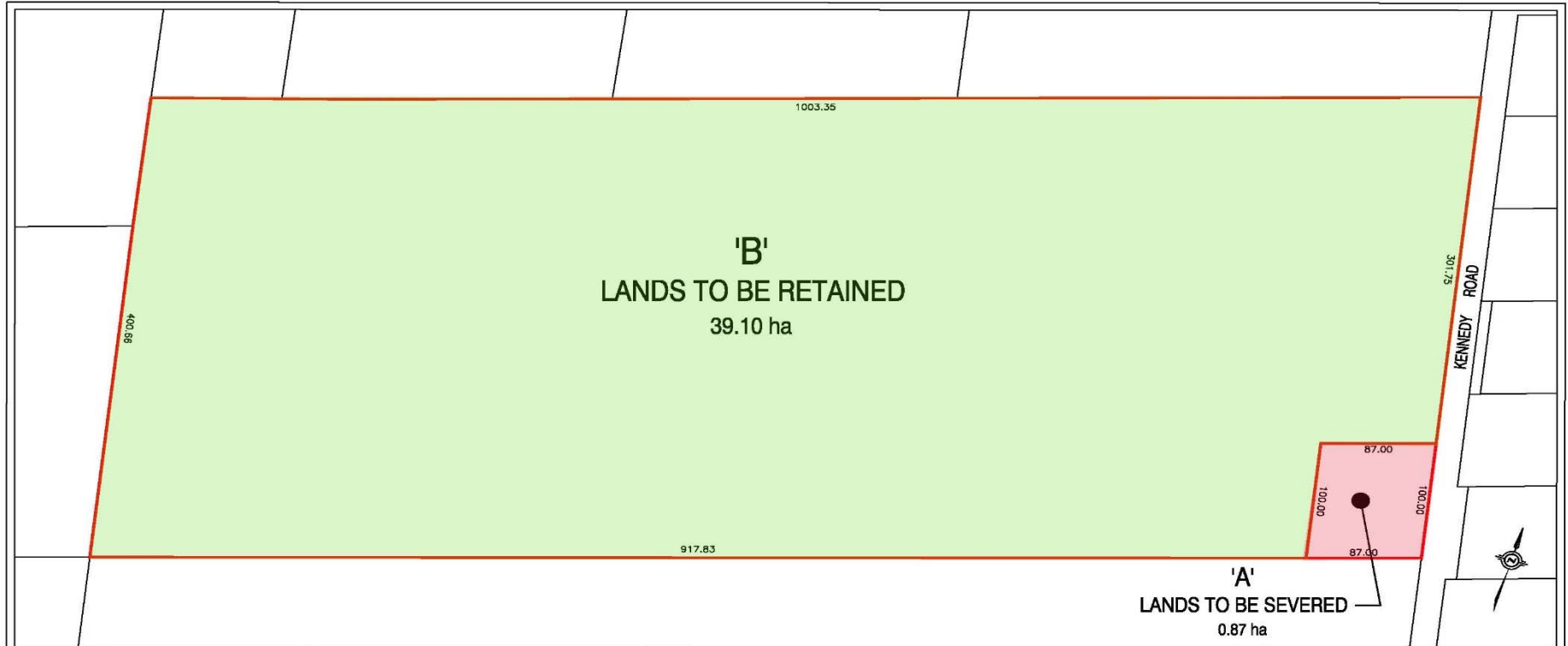
1: 9,028

July 20, 2017

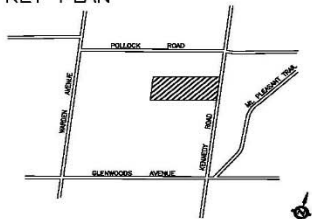


Notes

This map was printed from a YorkMaps application.



**KEY PLAN**



Subject Lands

Subject Lands  
39.97 ha

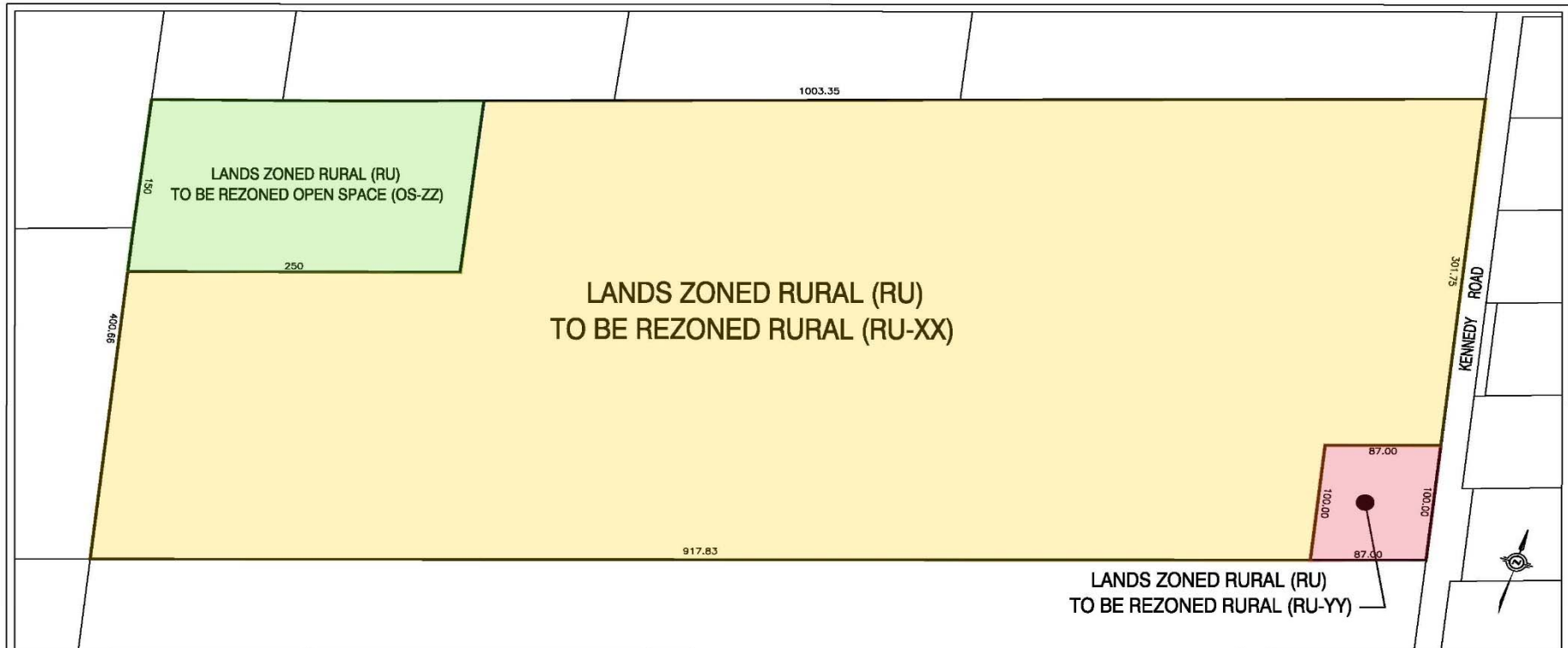
**SEVERANCE SKETCH**  
Don Chapman

23980 KENNEDY ROAD  
PART OF LOT 9, CONGRESSION 5 (N.G.)  
GEOGRAPHIC TOWNSHIP OF NORTH COWLESBURRY  
TOWN OF GEORGINA  
REGIONAL MUNICIPALITY OF YORK

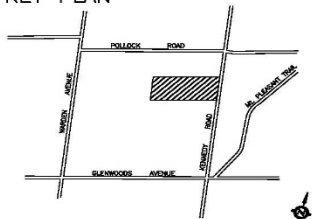
0 20 40 60 80 100 (m)		NORTH ARROW INDICATES THE TRUE NORTH AND IS NOT TO BE TAKEN AS A GUIDE TO ORIENT
Feet		
No.	Description	Date
1.		
2.		
3.		
4.		
5.		

*Michael Smith* PLANNING CONSULTANTS  
DEVELOPMENT COORDINATORS LTD.

Drawn by: VT	Date: JULY 22, 2017	Drawing Number: 1130-00
Checked by: M.R.S.	Scale: 1 : 2000	
Approved by: M.R.S.		



KEY PLAN



Subject Lands

Subject Lands  
39.97 ha

ZONING SKETCH  
Don Chapman Farms Limited

23980 KENNEDY ROAD  
PART OF LOT 9, CONGRESSION 5 (N.G.)  
GEOGRAPHIC TOWNSHIP OF NORTH OWLSBURY  
TOWN OF GEORGINA  
REGIONAL MUNICIPALITY OF YORK



No.	Description	Date
1.		
2.		
3.		
4.		
5.		

Michael Smith PLANNING CONSULTANTS  
DEVELOPMENT COORDINATORS LTD.

Drawn by: VT  
Checked by: M.E.S. DATE: JULY 28, 2017 Drawing No.: 1130-00  
Approved by: M.E.S. Scale: 1 : 3000