

REPORT NO. DS-2017-0072
FILE NOS. 02.187 & 03.1094

**REVISED APPLICATIONS TO AMEND THE
OFFICIAL PLAN AND
ZONING BY-LAW NO. 500
OXFORD DEVELOPMENTS
5659 BLACK RIVER ROAD, SUTTON**

Second Public Meeting
July 19, 2017
Town of Georgina



PUBLIC COMMENTS

- 1 written comment was received from the public in relation to the original proposal
- 0 comments have been received from the public in relation to the revised proposal



REPORT NO. DS-2017-0072
FILE NOS. 02.187 & 03.1094

AGENCY COMMENTS

Lake Simcoe Region Conservation Authority

- No objections with the revised applications
- Previous comments re: Natural Heritage and lot line boundaries have been satisfactorily addressed

York Region

- No objections with the revised applications
- OPA exempt from Regional approval



REPORT NO. DS-2017-0072
FILE NOS. 02.187 & 03.1094

DEPARTMENT COMMENTS

Recreation and Culture Department

- Satisfied with the revised development proposal
- Stockpiled soil has been relocated on-site to their satisfaction

Development Engineering Division

- No objections with the revised applications



REPORT NO. DS-2017-0072
FILE NOS. 02.187 & 03.1094

PROVINCIAL, REGIONAL & MUNICIPAL PLANNING DOCUMENTS

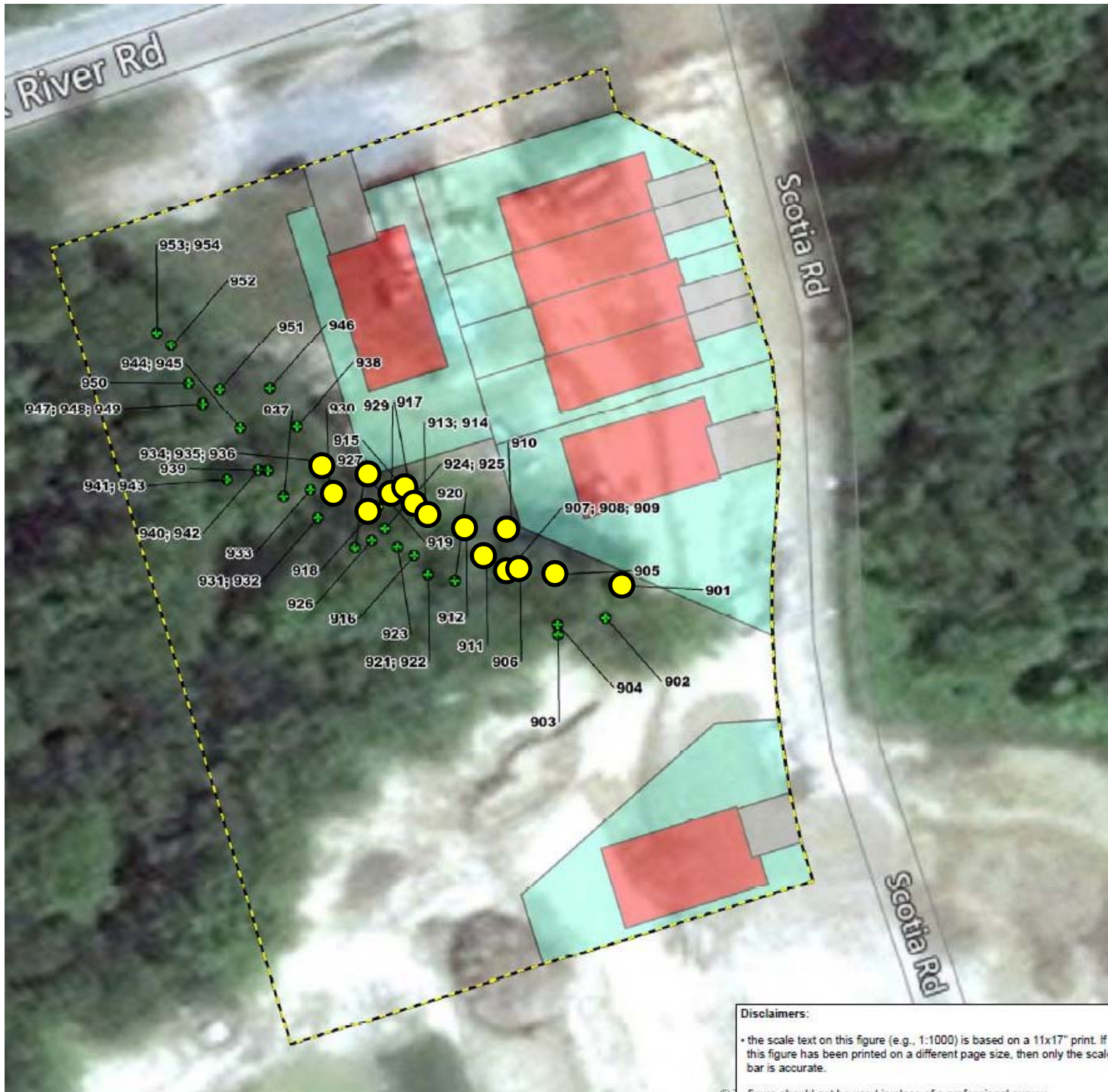
- Provincial Policy Statement (2014)
- Growth Plan (2006)/Greenbelt Plan (2005)
- Lake Simcoe Protection Plan (2009)
- York Region Official Plan (2010)
- Sutton/Jackson's Point Secondary Plan (2013)



REPORT NO. DS-2017-0072
FILE NOS. 02.187 & 03.1094



REPORT NO. DS-2017-0072
FILE NOS. 02.187 & 03.1094



Legend

Planning Boundaries
 Subject Property

Proposed Development and Site Alteration
 Lot
 Building Envelope
 Driveway

Tree Inventory and Health Assessment - RiverStone
 No Anticipated Impact
 Potential Damage to Rooting Zone

Orthorectified aerial photo - June 2013

Scale	RS Project No.	Date Last Updated	By
1:450	2012-088	May 3, 2016	TK

0 6.5 13 Metres

Figure 2. Locations of Tagged Trees that have the potential to be Impacted by the Proposed Development.

Prepared for Oxford Developments.

Disclaimers:
 • the scale text on this figure (e.g., 1:1000) is based on a 11x17" print. If this figure has been printed on a different page size, then only the scale bar is accurate.
 • this figure should not be used in place of a professional survey

CONCLUSION

- Staff recommend approval of the applications



REPORT NO. DS-2017-0072
FILE NOS. 02.187 & 03.1094