

REPORT NO. DS-2017-0128

FILE NO. 03.1116

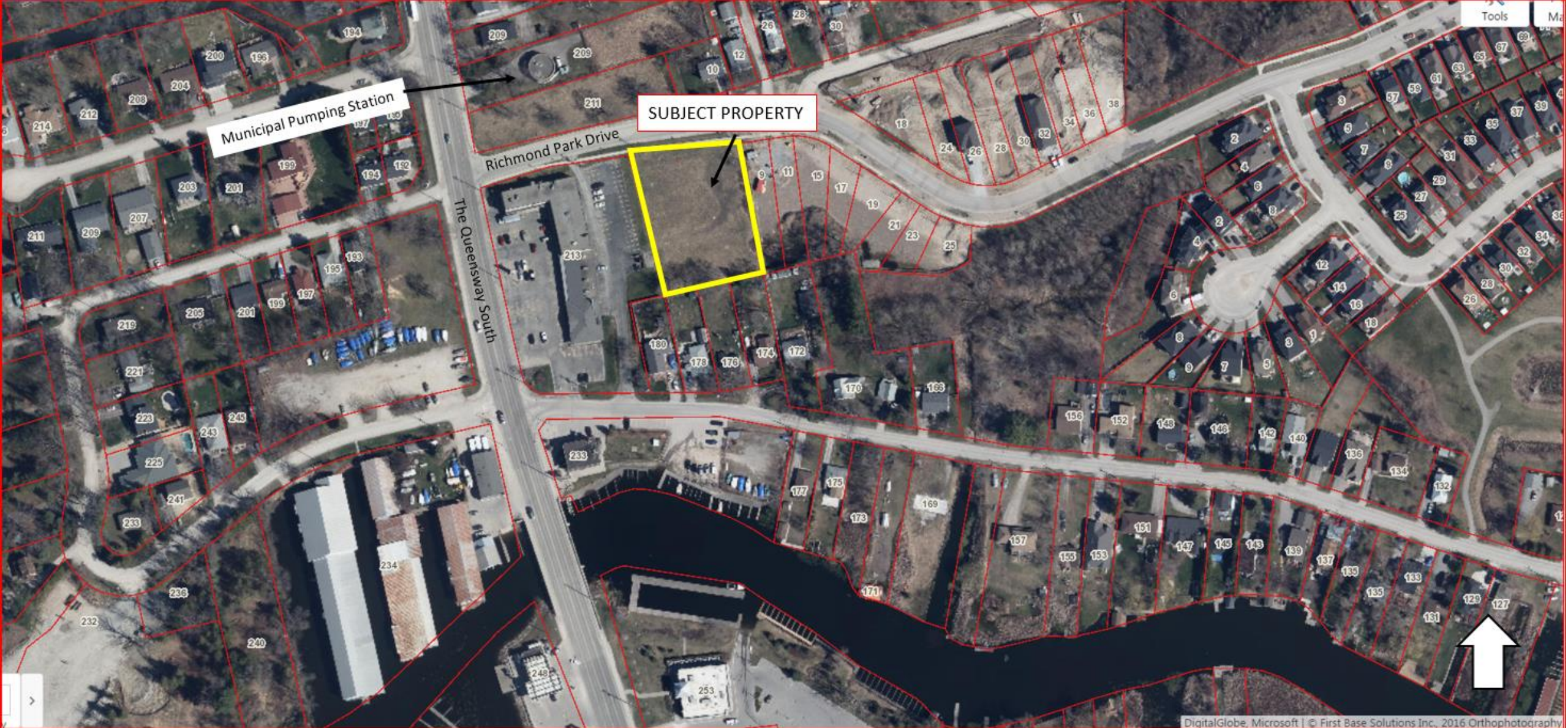
APPLICATION TO AMEND ZONING BY-LAW NO. 500

SB DEVELOPMENTS INC
S/S RICHMOND PARK DRIVE

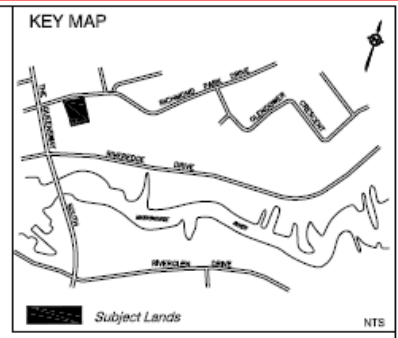
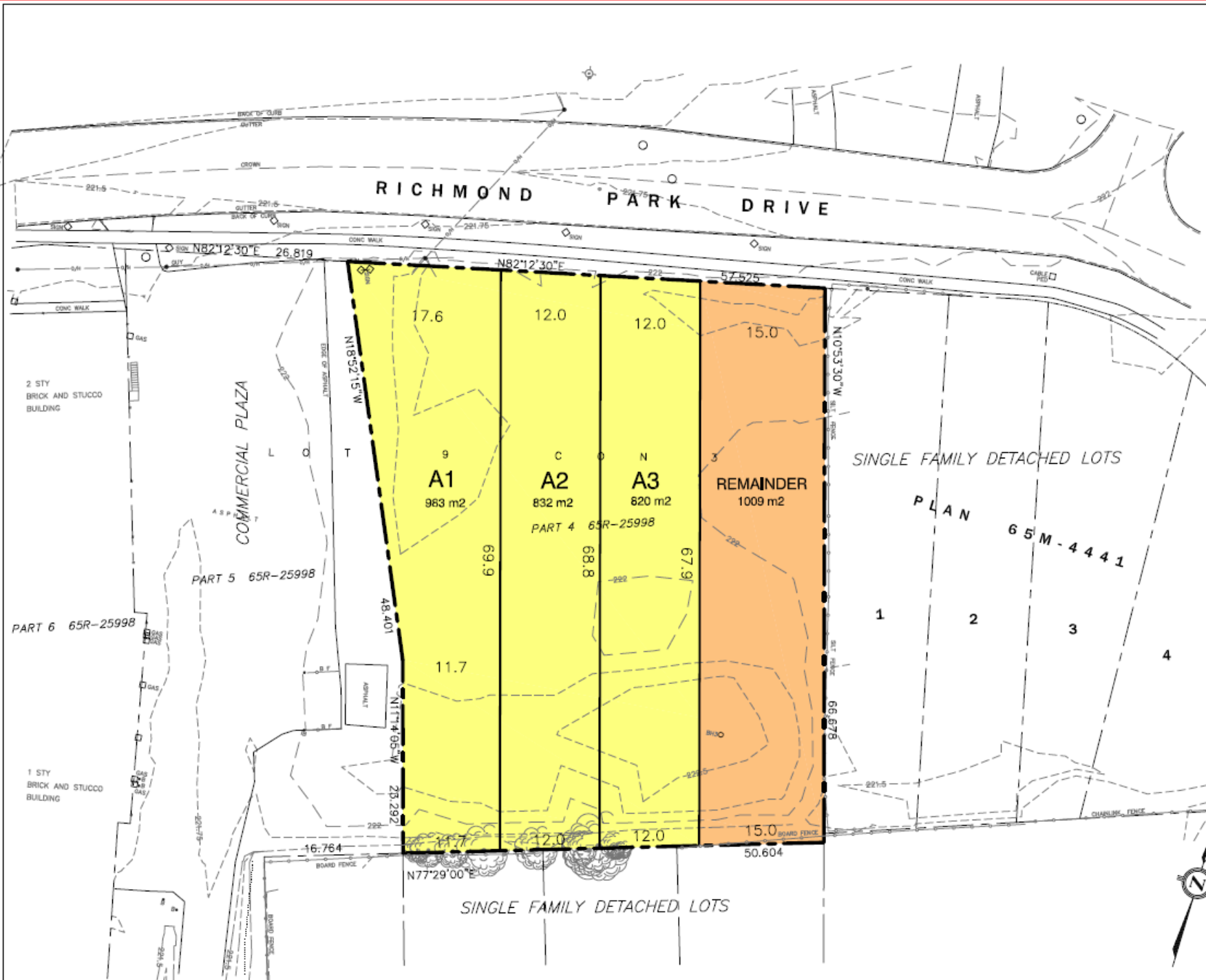
Statutory Public Meeting
November 8, 2017
Town of Georgina



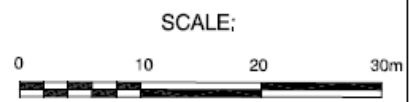
GEORGINA



GEORGINA



TOTAL LOT AREA = 3644 m2



SEVERANCE SKETCH

S.B. DEVELOPMENTS INC.
(Domenic Sorbara)

PART LOT 9, CONCESSION 3 (N.G.)
ALSO DESCRIBED AS PART 4
REFERENCE PLAN 65R-25998
TOWN OF GEORGINA
REGIONAL MUNICIPALITY OF YORK

DATE: 1330	REVISED: 1330	SCALE: 1:500	PROJECT: VT
DATE: August 29, 2016		MISC:	VT

Michael Smith PLANNING CONSULTANTS
DEVELOPMENT COORDINATORS LTD.

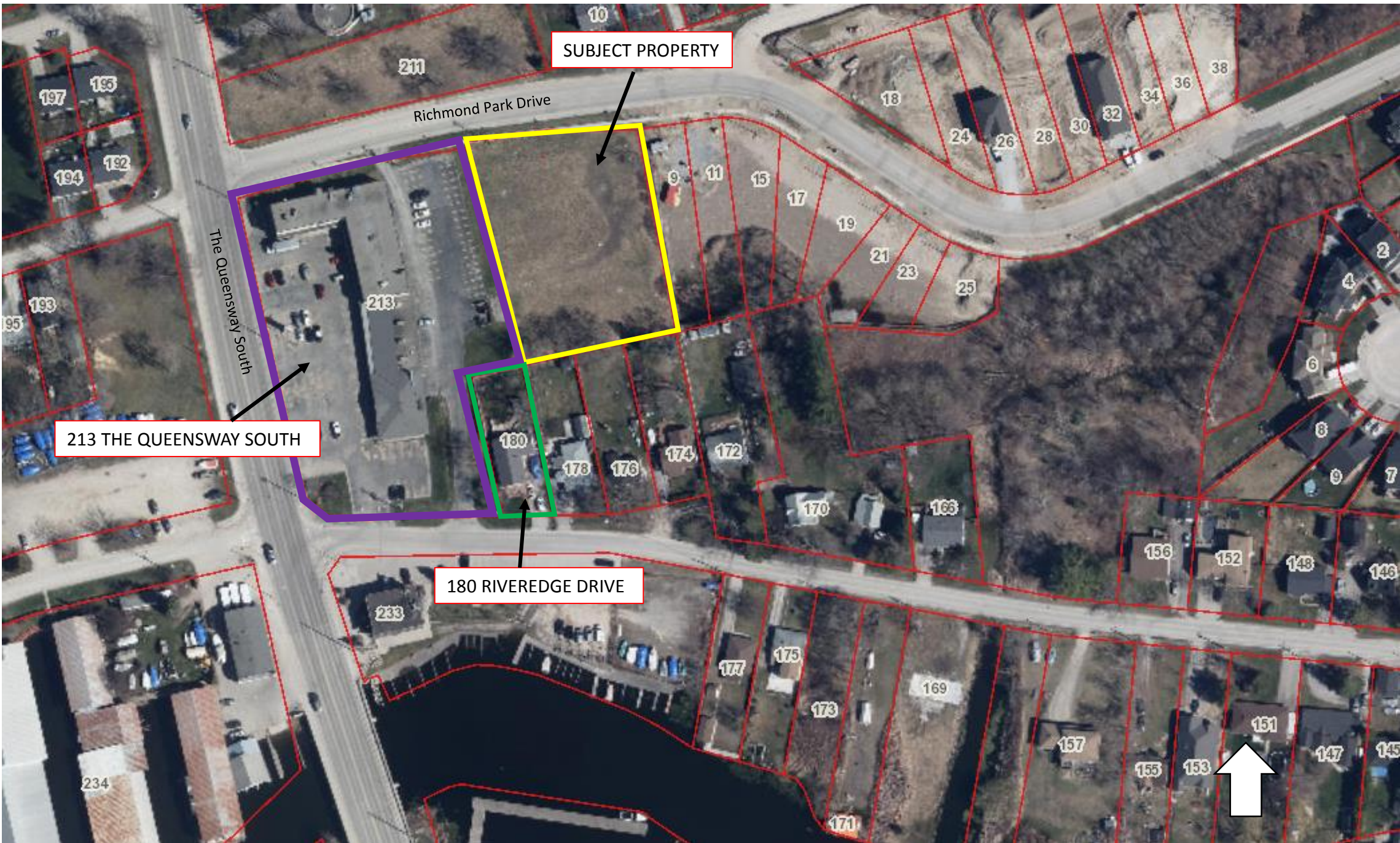
DATE: Friday, 8, 2016
TIME: 10:38-00

AGENCY & DEPARTMENTAL COMMENTS

- No Objections
- York Region – No Comment

PUBLIC COMMENTS

- Bill Farrell – 54 Fairpark Lane, Sutton
- Evelyn Bowles, Sarge Malone – 180 Riveredge Drive, Keswick
- Tony Ma – 213 The Queensway South (Commercial Plaza)



SUBJECT PROPERTY

Richmond Park Drive

The Queensway South

213 THE QUEENSWAY SOUTH

180 RIVEREDGE DRIVE



