

Proposed Addition to Learning Together Childcare Nursery

319 The Queensway South - Keswick

November 29, 2017 PUBLIC MEETING



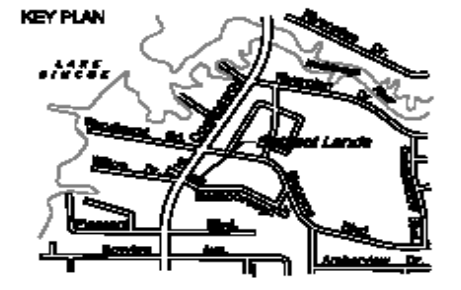
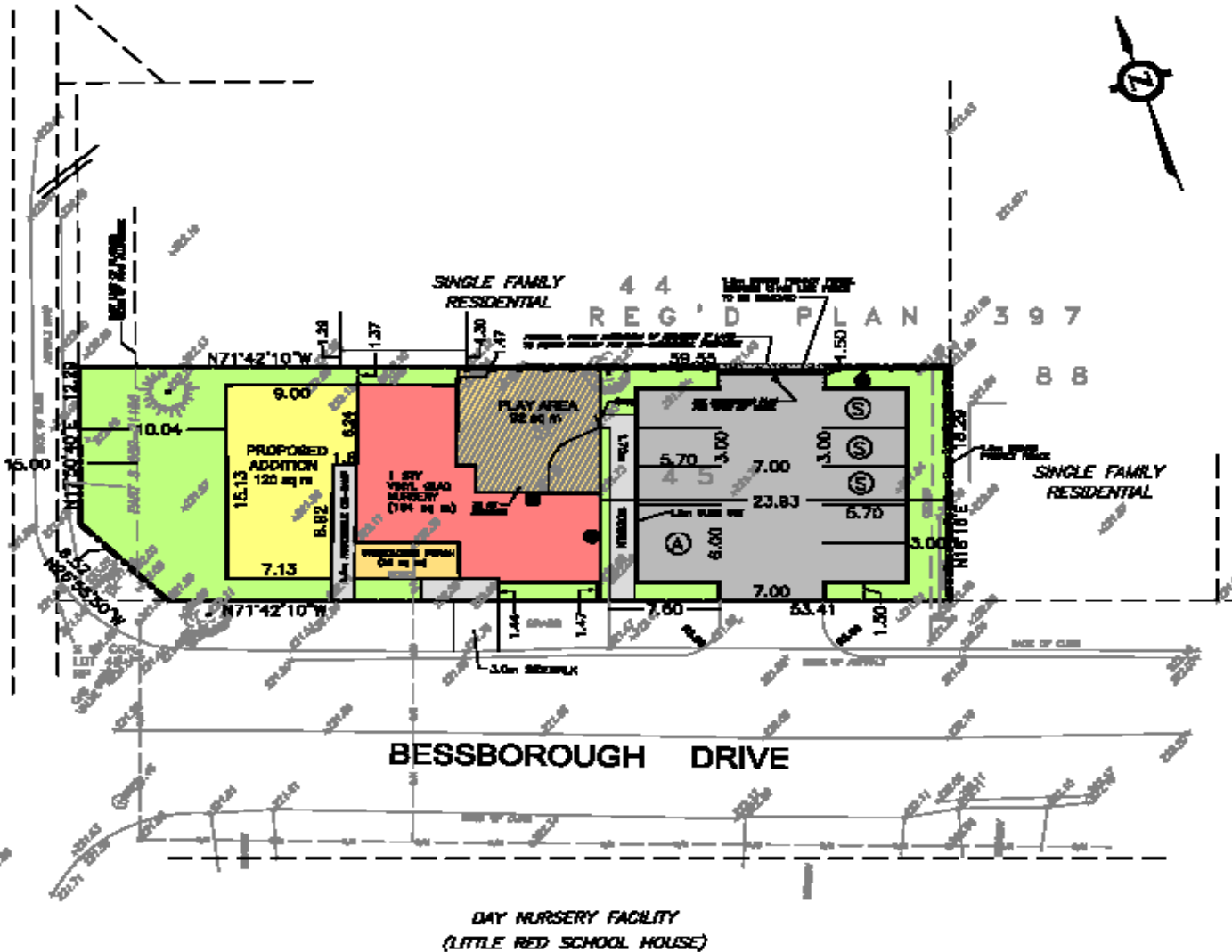
1: 564
January 26, 2017



Notes

This map was printed from a YorkMaps application.

THE QUEENSWAY SOUTH (Y.R. 12)



ZONING STATISTICS 'R1-124' ZONE

DESCRIPTION	REQUIRED	PROVIDED	COMPLIANCE
Lot Frontage	19.8m (min)	18.28m	✓
Lot Area	540 sq m (min)	850 sq m	✓
Rear Yard	6.0m (min)	6.0m	✓
Rear Side Yard	1.4m (min)	1.4m	✓
Driveway	1.4m (min)	1.4m	✓
Garage	1.4m (min)	1.4m	✓
Front Yard	8.0m (min)	23.9m	✓
Interior Side Yard	1.25m (min)	1.37m	✓
Existing Floor Area	188 sq m (min)	164 sq m	✓
Proposed Floor Area	188 sq m (min)	304 sq m	✓
Lot Coverage	30% (max)	30%	✓
Height	11m (max)	2m H+	✓
Parking	18 Spaces	9 Spaces incl. 3 Staff Spaces & 1 Accessible Parking Space	✗

- Ⓢ Staff Parking Space
 - Ⓐ Accessible Parking Space
 - On Lane Lighting fixture designed to limit horizontal light pollution onto neighbouring residential properties.
- Garage to be stored in doors and brought to work



**PROPOSED SITE PLAN
EXPANSION TO DAY NURSERY**

NICK DIDOMENICO

PART OF LOT 45, REGISTERED PLAN 887
KERRICK
GEOGRAPHIC TOWNSHIP OF NORTH GUILDFORD
REGIONAL MUNICIPALITY OF YORK

No. 28, 2007

Michael Smith PLANNING CONSULTANTS
DEVELOPMENT COORDINATORS LTD.

1129-00