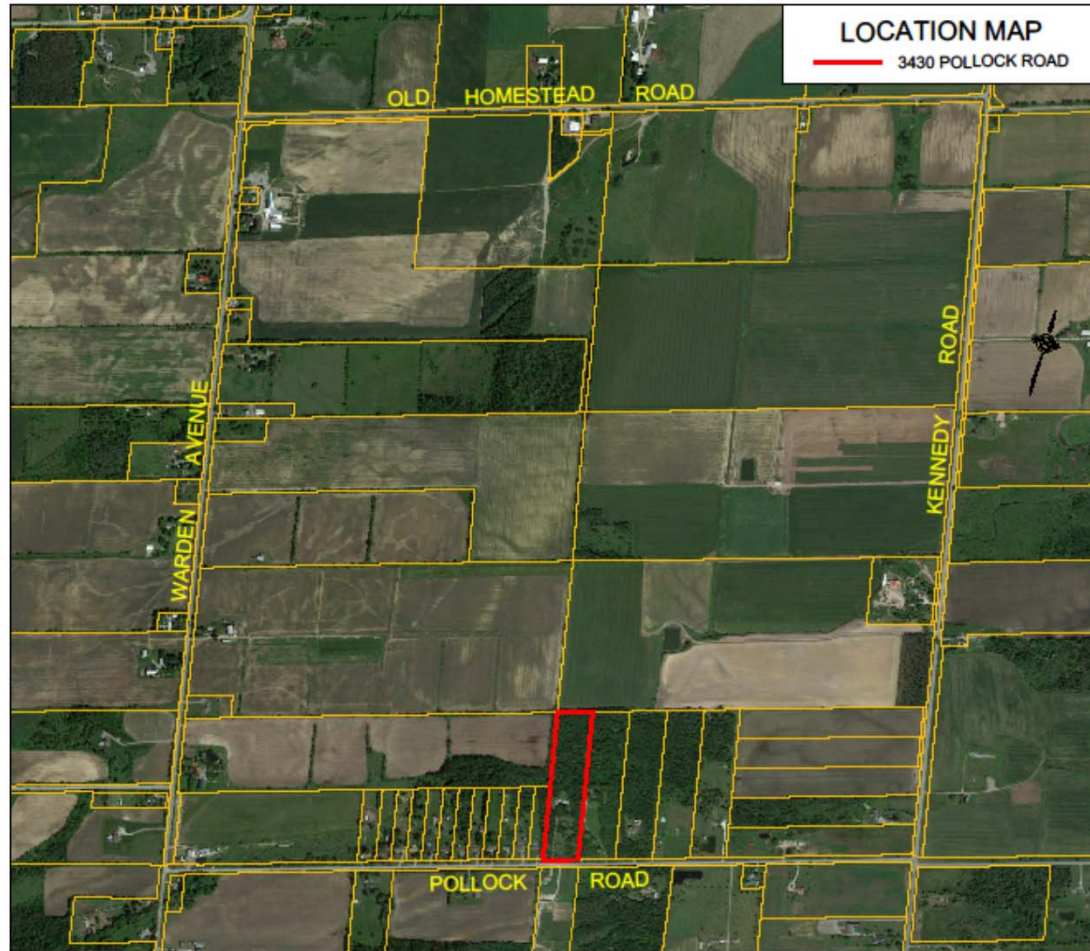
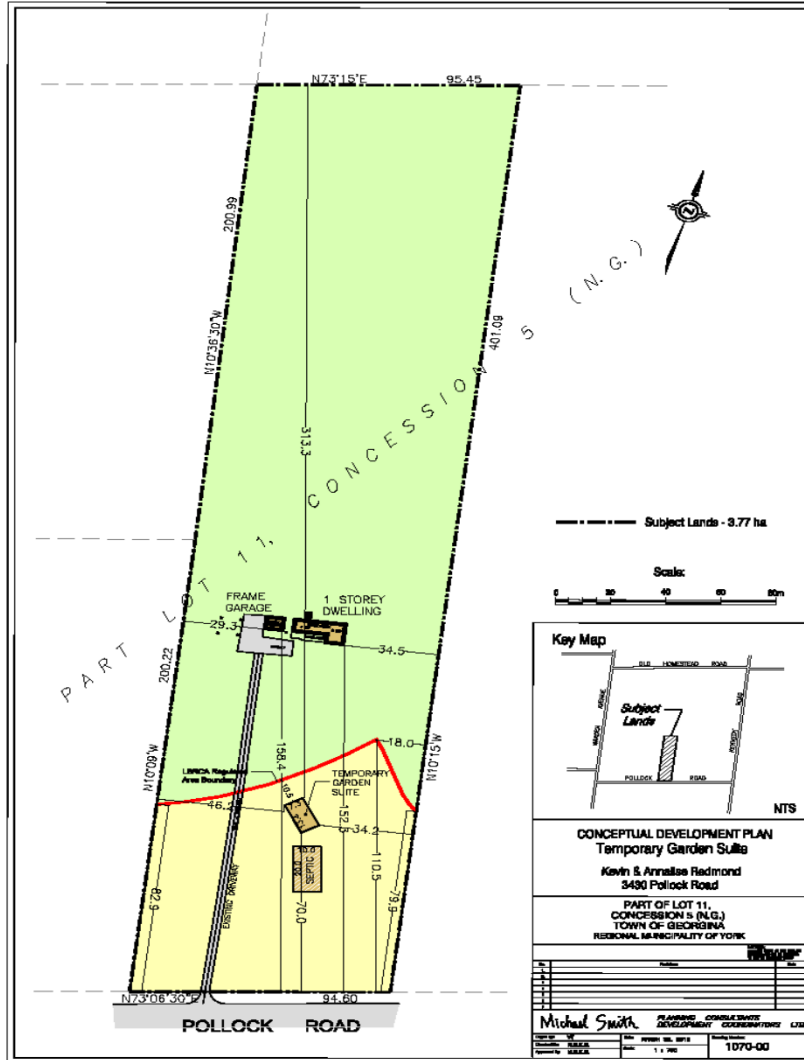


Kevin and Annalise Redmond  
3430 Pollock Road

**Proposed “Garden Suite” Dwelling**





## Site Details

- Contains existing two storey dwelling and detached garage
- 3.77 ha (9.3 acres) and 94.88 metres (311 feet) of frontage on Pollock Side Road
- Depth of 401 metres (1300 feet)
- Approximately north 2/3rds with LSRCA Regulated Area

## Proposed “Garden Suite Details” (Manufactured or Mobile Home)

- 7.3 metres (24 feet) X 13.4 metres (44 feet)
- 4.5 metres (15 feet) in height
- To be located in southerly 1/3 of property outside of LSRCA Regulated Area
- Proposed 50 metre (164 feet) minimum front yard setback
- Proposed interior side yard setbacks of 25 metres (82 feet)



ARMSTRONG MODULAR HOMES  
1868 Commerce Park Drive  
Innisfil, ON L9S 4A3  
(705) 436-5611 1-800-387-5611  
[www.armstrongtrailers.com](http://www.armstrongtrailers.com)